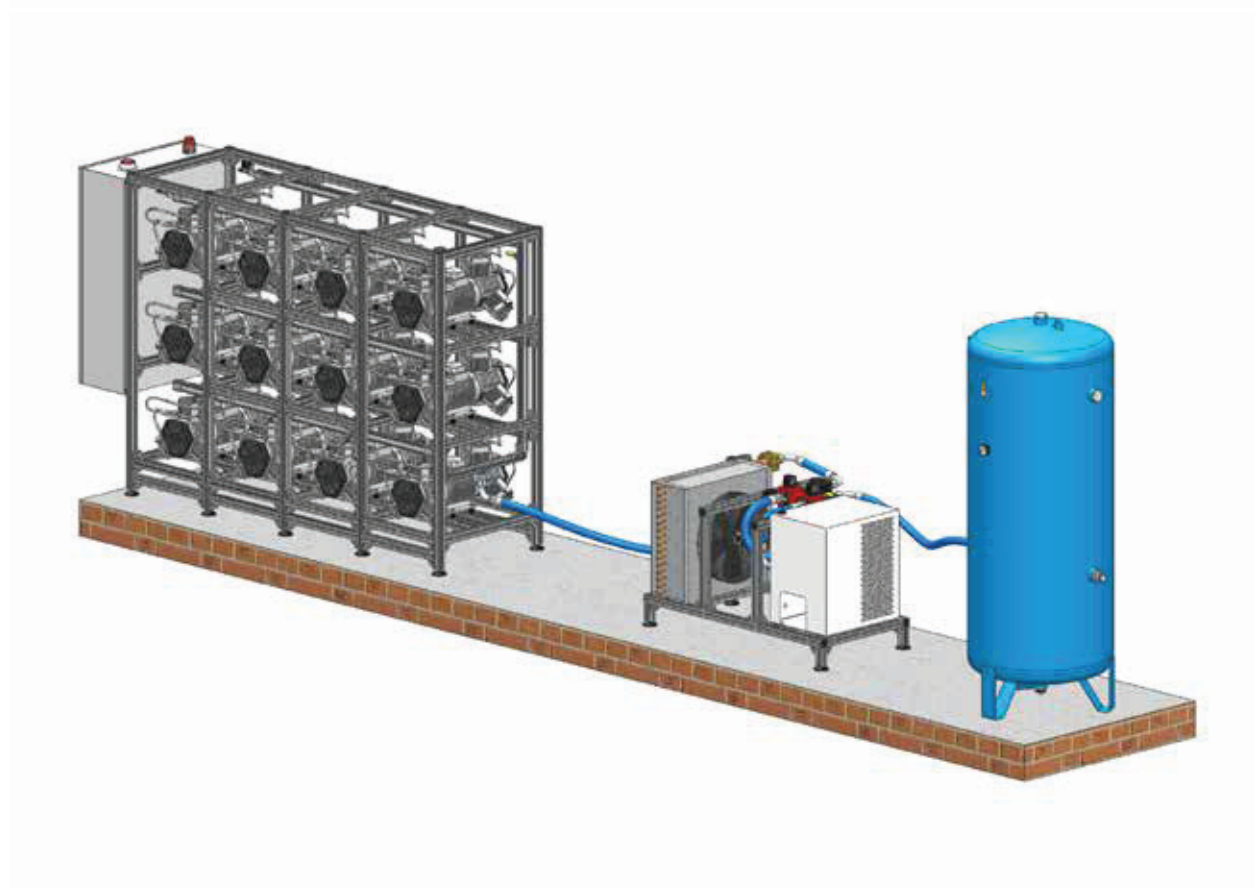
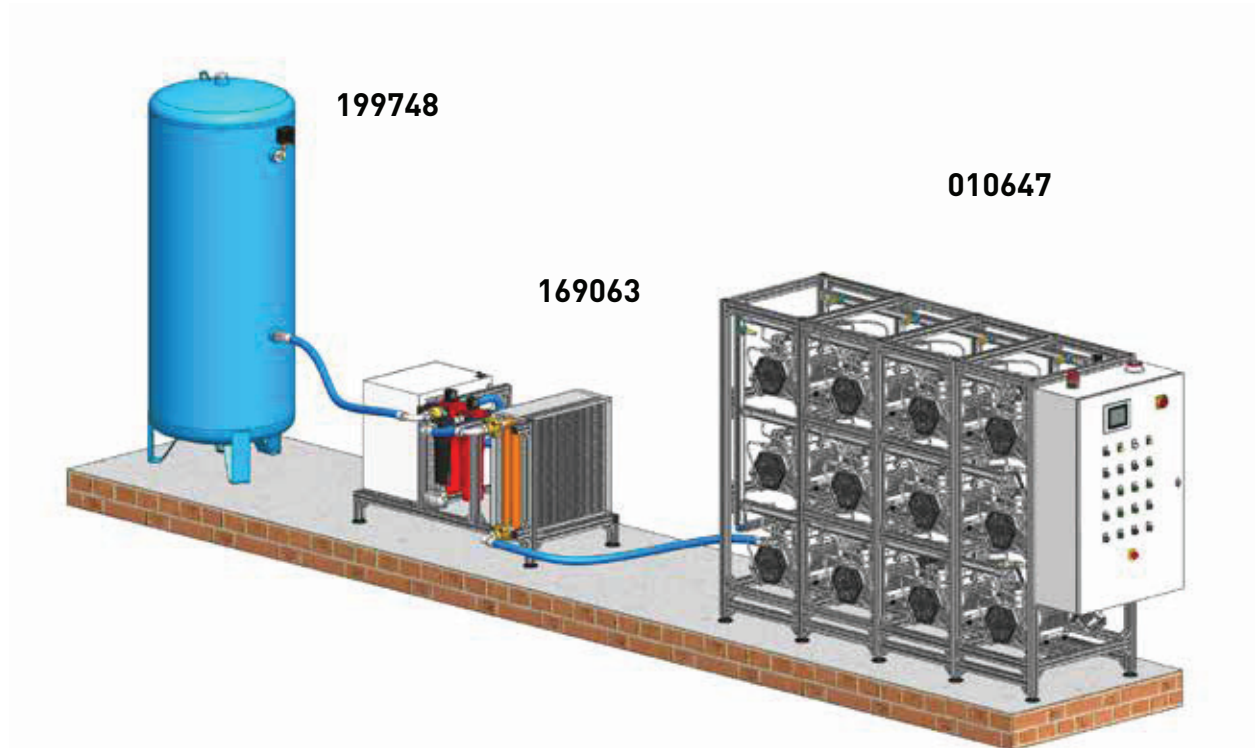


# CENTRALE PRODUZIONE ARIA COMPRESSA PER 85 RIUNITI

## COMPRESSED AIR PRODUCTION PLANT FOR 85 DENTAL UNITS



Art. 010647 (400V / 50Hz)	<b>ACB 1200 - Telaio in profilato di alluminio con 12 testate indipendenti a 6 cilindri trifase e centralino con PLC e touch screen</b> Motori trifase 50 Hz 39 kW resi totali 93 A. Aria resa a 5 bar 5040 N l/min in uscita dal telaio.
Art. 010649 (380V / 60Hz)	Motori trifase 60 Hz 45,60 kW resi totali 111 A. Aria resa a 5 bar 5544 N l/min in uscita dal telaio. Livello di pressione sonora: ..... dB (A) Dimensioni indicative L=2800 mm P= 800 mm H= 1900 mm
Art. 169063 (per telaio 50Hz)	<b>Linea di filtraggio ed essiccazione dell'aria compressa</b> Scambiatore aria/aria per 12 testate a 6 cilindri che riporta l'aria, in uscita dalla centrale di produzione aria compressa, da circa 100°C a temperatura ambiente + 5°C.
Art. 169049 (per telaio 60Hz)	Essiccatore a ciclo frigorifero con scaricatore elettronico di condensa. Punto di rugiada in pressione +3°C. Temperature ambiente di esercizio: min. +5°C / max + 35°C. Dimensioni indicative: L=850 mm P=950 mm H=900 mm
Art. 199748	<b>Serbatoio aria CE litri 900 trattato internamente</b> Dimensioni indicative: D=800 mm H=2225 mm

Item 010647 (400V / 50Hz)	<b>ACB 1200 - Aluminium frame fitted with 12 independent three-phase six cylinder compressor heads, control panel with PLC and touch screen</b> Three-phase motor 50 Hz, total 39 kW – 93 A. Produced air at 5 real bar 5,040 N l/ min. coming from the compressed air production plant.
Item 010649 (380V / 60Hz)	Three-phase motor 60 Hz, total 45.6 kW – 111 A. Produced air at 5 real bar 5,544 N l/min. coming from the compressed air production plant. Sound pressure level: ..... dB (A) Approx. dimensions: W= 2800 mm D= 800 mm H= 1900 mm
Item 169063 (for 50Hz plant)	<b>Compressed air filtration and drying system</b> Air/air exchanger for 12 six-cylinder compressor heads which sets back the air coming out from the compressed air production plant from approx. +100 °C to room temperature + 5 °C. Refrigerating cycle dryer with electronic condensation discharger. Under pressure dew point +3 °C.
Item 169049 (for 60Hz plant)	Operation room temperature: min. + 5 °C /max + 35 °C. Approx. dimensions : W=850 mm D=950 mm H=900 mm
Item 199748	<b>900 litres CE tank with special internal lining</b> Approx. dimensions: Diameter =800 mm H=2225 mm